

 R E C E P T I O N

2/9 Informational/Large Format –
Dimensional Letters

Font: 3"(H) Univers 57 Condensed

Fabrication: Code H8 or E8

 ELEVATOR TO LOWER LEVEL
2/9

Section 3 > Interior signage > Sign specifications

3/1.1 Overhead Wayfinding
(large without arrow)

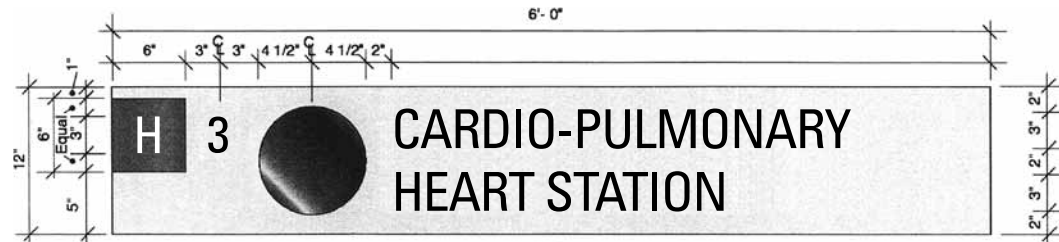
3/1.2 Overhead Wayfinding (large
with arrow)

3/1.3 Overhead Wayfinding (large
text only)

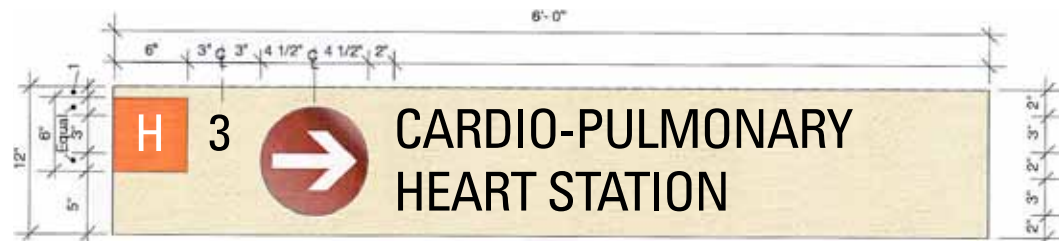
Absolute size: 1'(H) x 6'(W)

Font: Univers 57 Condensed

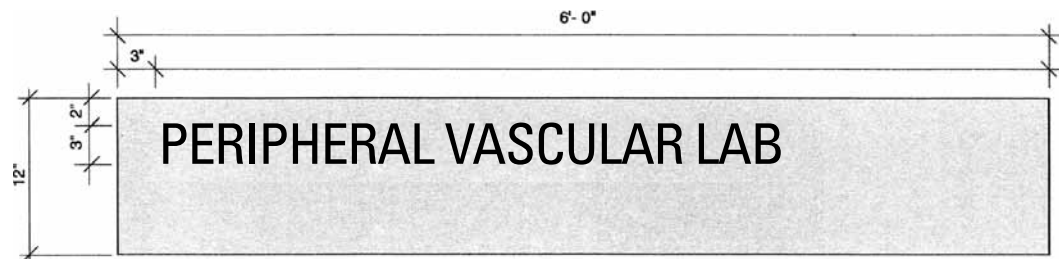
Fabrication: Code H5/H5A or E5/E5A



3/1.1



3/1.2



3/1.3



3/2.1



3/2.2

3/2.1 Overhead Wayfinding
(small with or without arrow)

3/2.2 Overhead Wayfinding
without Building/Floor Designation
(small with or without arrow)

Absolute size: 1'(H) x 4'(W)

Font: Univers 57 Condensed

Fabrication: Code H5/H5A or E5/E5A

Section 3 > Interior signage > Sign specifications

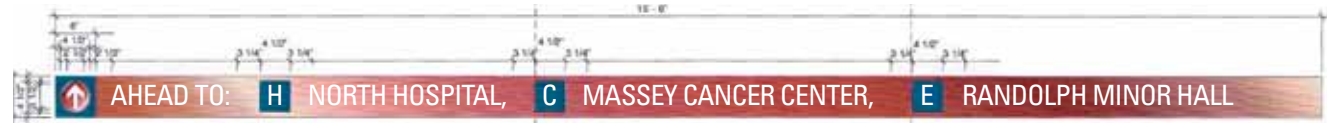
3/3 Overhead Wayfinding

Directional

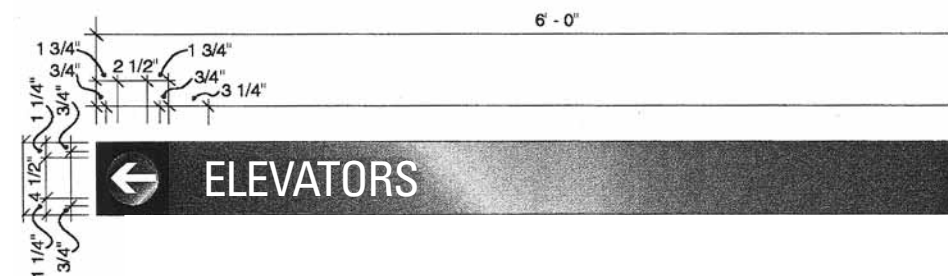
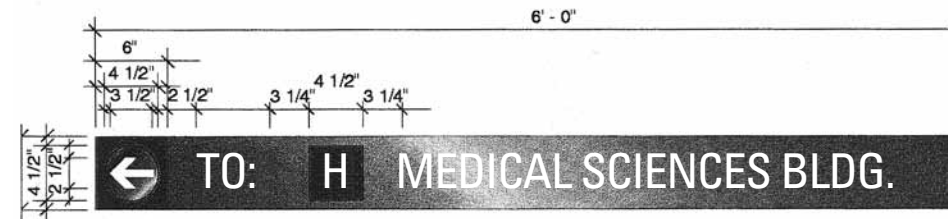
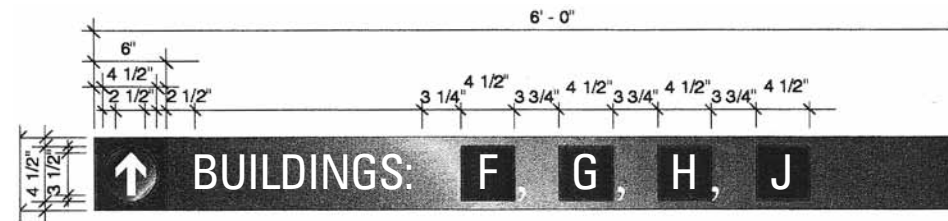
Absolute size: 4-1/2"(H) x 6'(W)

Font: Univers 57 Condensed

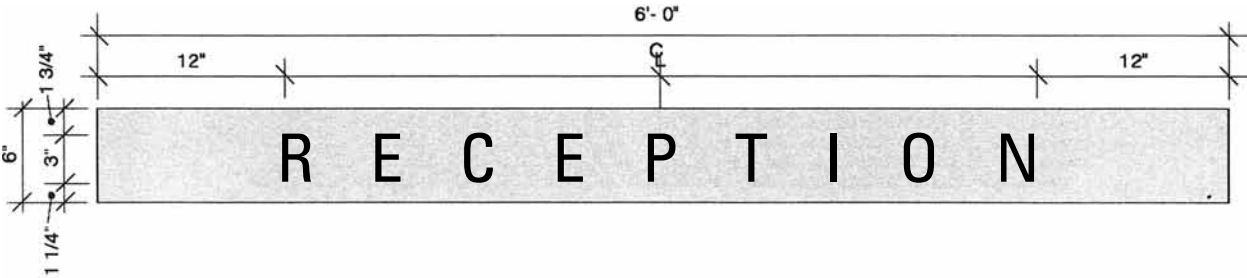
Fabrication: Code H6/H7A or E6/E7A



3/3



3/3



3/3.1 Overhead Identification

- Absolute size:** 6"(H) x 6'(W)
- Font:** Univers 57 Condensed
- Fabrication:** Code H5A or E5A

3/3.1

Section 3 > Interior signage > Sign specifications

3/4.1 Wall-mounted Wayfinding
Department Suite Identification
with Insert (small)

3/4.3 Wall-mounted Wayfinding
Department Suite Identification
with Insert (small with arrow)

3/4.5 Wall-mounted Wayfinding
Department Suite Identification
with Insert (small without arrow)

Absolute size: 15"(H) x 12"(W)

Font: 1-1/4"(H) Univers 57 Condensed

Insert: 8-1/8"(H) x 12"(W)

Fabrication: Code H4B/H7A or E4B/E7A

3/4.2 Wall-mounted Wayfinding
Department Suite Identification
with Insert (large)

3/4.4 Wall-mounted Wayfinding
Department Suite Identification
with Insert (large with arrow)

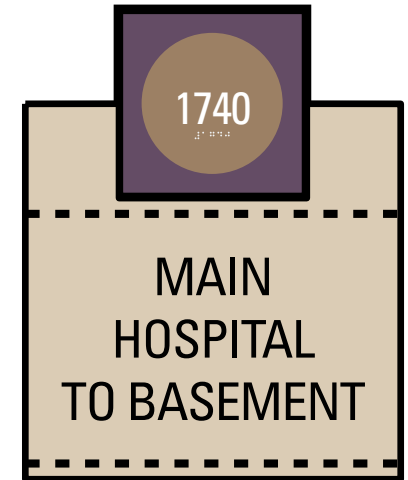
3/4.6 Wall-mounted Wayfinding
Department Suite Identification
with Insert (large without arrow)

Absolute size: 30"(H) x 24"(W)

Font: 2-1/2"(H) Univers 57 Condensed

Insert: 16-1/4"(H) x 24"(W)

Fabrication: Code H4B/H7A or E4B/E7A



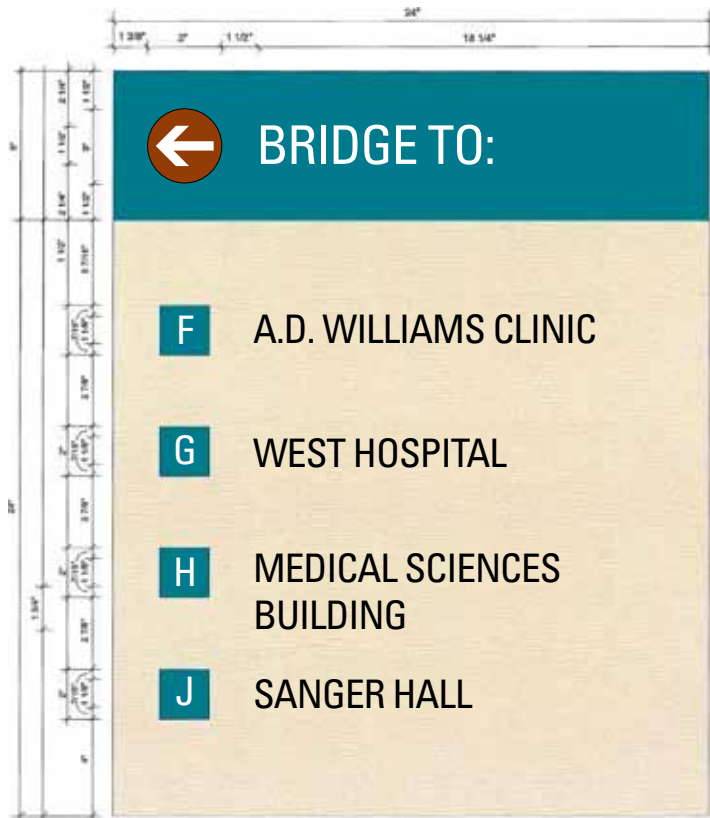
3/4.1 and 3/4.2



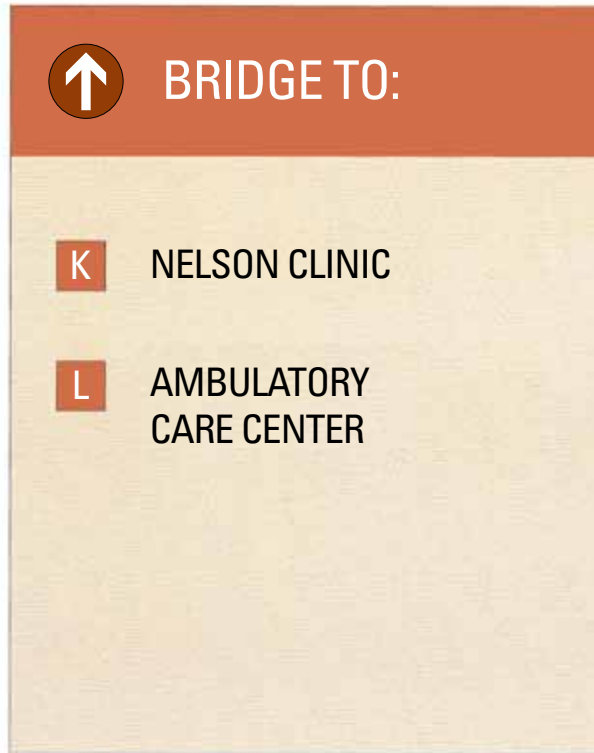
3/4.3 and 3/4.4



3/4.5 and 3/4.6



Header background: Color 2
Plaque background: Color 4



Header background: Color 3
Plaque background: Color 4
Copy: Appropriate route color w/white letter code;
black for building name

3/5

3/5 Wall-mounted Directional and Area Identification

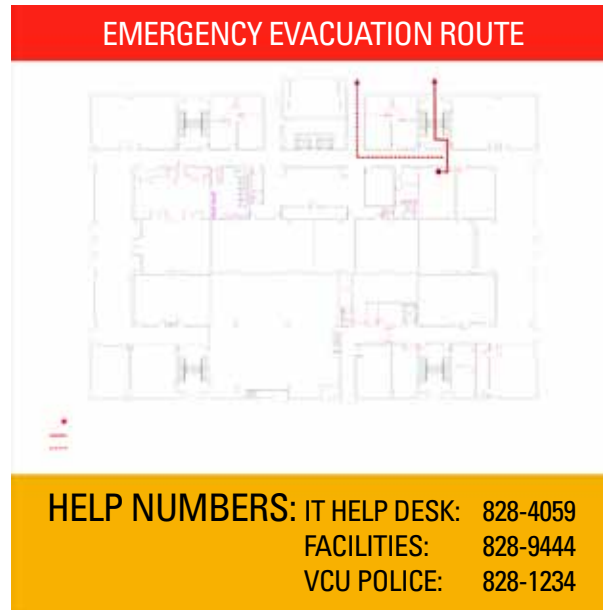
Absolute size: 32"(H) x 24"(W)

Font: 1-1/8"(H) Univers 57 Condensed

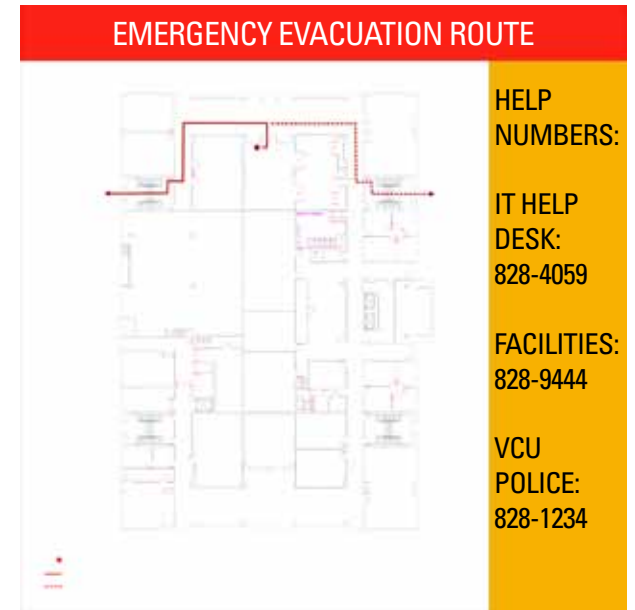
Fabrication: Code H4B/H7A or E4B/E7A

3/6 Emergency Evacuation/Help Signs

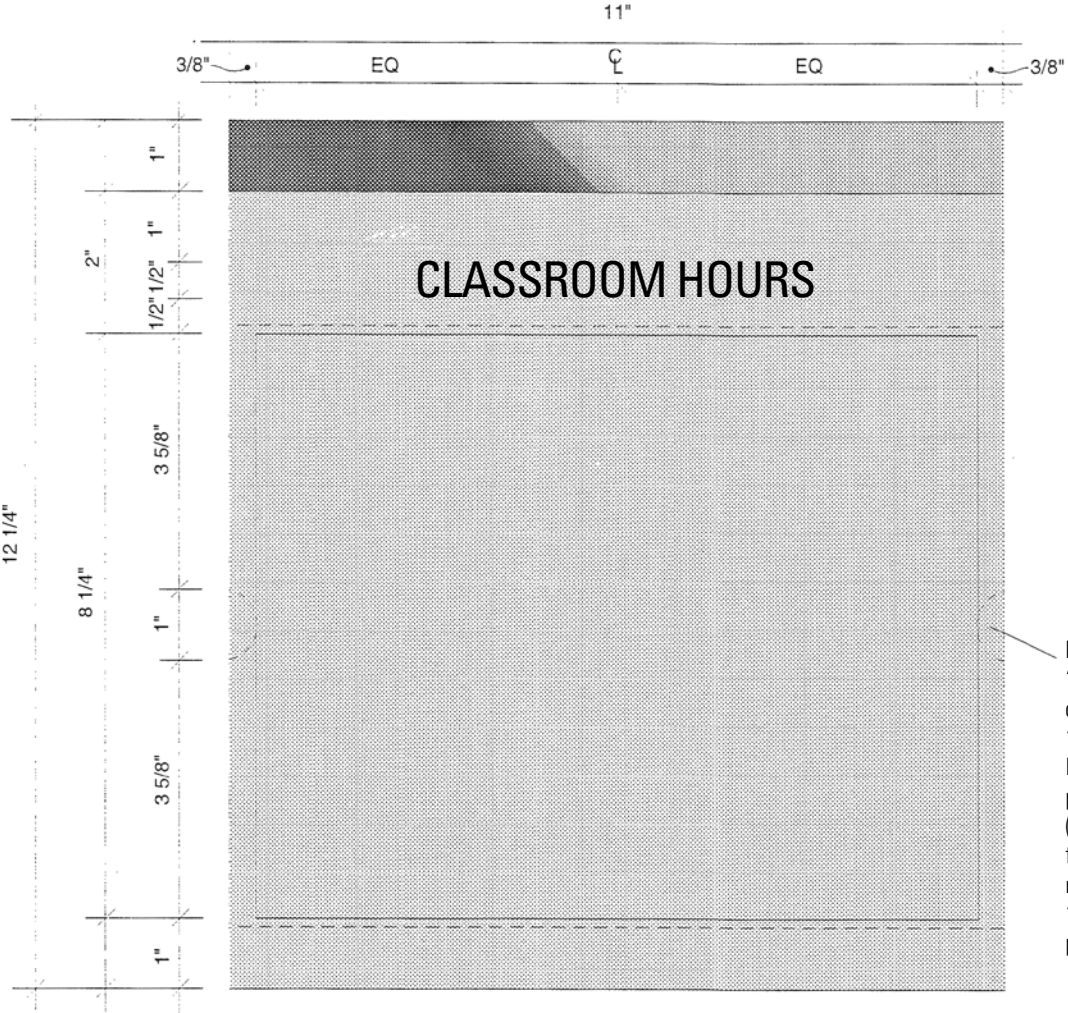
Absolute size: 11"(H) x 11"(W)
Sintra white 1/8"
Digital image printed on controltac



3/6.1



3/6.2



4/1 Horizontal Information with Window

- Absolute size:** 12-1/4"(H) x 11"(W)
- Font:** To Fit, Univers 57 Condensed
- Insert:** 8-1/2"(H) x 11"(W)
- Fabrication:** Code H1D or E1D

Left and right "thumb hole" cutaways in 1/4"-thick base layer of sign plaque allow (hidden) access for insertion/removal of 11" x 8 1/2" paper inserts.

4/1

4/2 Vertical Information with Window

Absolute size: 14-3/4"(H) x 8-1/2"(W)

Font: To Fit, Univers 57 Condensed

Insert: 11"(H) x 8-1/2"(W)

Photopolymer: 2"(H) x 8-1/2"(W)

Fabrication: Code H1/H1D or E1/E1D

